

From the desk of the WA State Coaching Director

## SPECIAL POINTS OF INTEREST:

- Arrange a Coaching Clinic at your Club
- Look at the WACTA website under the Coaching “tab” for more information
- WA State Coaching Director—Christine Alexander 042 888 3468
- Send me your Club advert & let Coaching help you advertise it as well to all Members & Clubs

## MAJOR SHOTS - MAY / JUNE

State 5 Stand Title  
14 & 15 May 2016

ISSF Qualifiers  
14 & 15 May 2016

WAGC DTL Carnival  
20—22 May 2016

Kalgoorlie (EGCTC)  
3—5 June 2016

ISSF Qualifiers  
11 & 12 Jun 2016

## NEXT ISSUE:

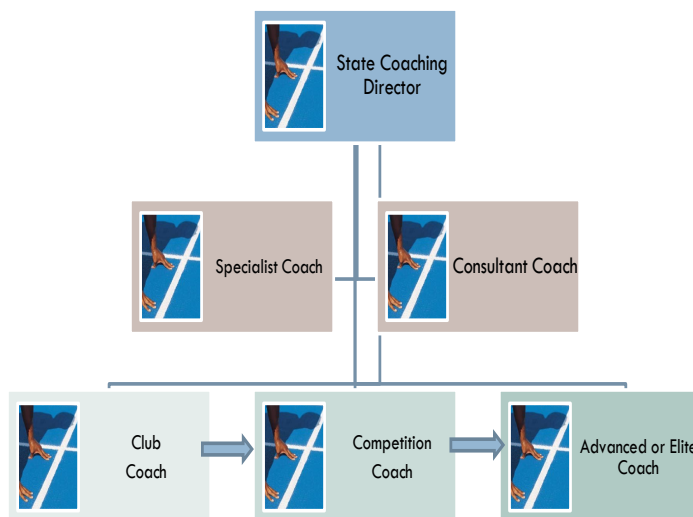
Future of Coaching  
WA (continued)

Coaching Risk  
Management

Coaching Tips for  
shooting targets

Coaching “Think  
Tank”

## Future of Coaching in WA



### What is the future for WA Coaching in Clay Target and WACTA?

Interesting question and one that I hope all past & current Coaches plus members will get together, along with the Coaching Division, telling us what, where, how and why you want us to be here.

Tell us what results you expect from Coaching, whether it be performance related, one on one mentoring, Junior or Ladies development and of course specific to the Disciplines under the ACTA banner. Do you expect there to be some resources available for your Club Coaches to upskill, thereby being able to pass back to you the member, more in depth knowledge to help with your shooting.

Well, basically as above, this is the expected format for the Coaching Division of WACTA. **Club Coaches** are the 1st point

of contact for any person wanting to be a part of Clay Target shooting. They develop the “grass root” of our membership from being a novice and are the Coaching point of information in any Club. These Coaches are a very valuable asset to the Club and the sport. **Competition Coaches** should be involved in helping the club Coaches with all levels of coaching within the Club & Zone, delivering Modules at Courses run by the State Coaching Director. They also are able to assess Club Coaches for Accreditation Renewals.

**Advanced Coaches** in essence are still required to commit to assisting at all levels of Coaching but are mainly focused on the higher level shooters like State / National or International representative Teams.

**Specialist Coaches** are associated with a specific Discipline and

are brought in to run the appropriate Clinic. It is preferred that they are a Coach but they may be a very high profile shooter. **Consultant Coach** is one whose specialty is of a professional nature, such as involved in Vision, Psychology or Nutrition.

**State Coaching Director (SCD)** is a voluntary voting position on the WACTA Executive. The SCD is tasked with the admin & development of Coaching and members in general. The SCD may be, from time to time, involved in the physical part of Coaching Clinics but more often it will be in upskilling of current Coaches and training of new Coaches.

*This is an extract from the WA Coaching Proposal to be presented to the WACTA Executive at the May / June meeting*

**More information in the next Newsletter—June 2016 after the Executive meeting**

## Coaching Information Highway - How will you or us get it?

The Coaching Division will be utilizing as many forms of media to get the information out to the Coaches and members

It could be through the use of

- ◆ Newsletters
- ◆ Articles on the WACTA website

- ◆ Fliers to Clubs
- ◆ Through the WACTA Minutes
- ◆ Via the Zone Delegates
- ◆ Through Coaches
- ◆ At Coaching Clinics or Courses

- ◆ Not at this stage thru' Social Media though it will be investigated.
- ◆ Through your feedback to the Zone Delegate / State Executive or direct to me on email

# WACTA Coaching News

ISSUE 2

MAY 2016

From the desk of the WA State Coaching Director

## Forms Available to Host Coaching Clinics

**When the Club wants to access funding or support from WACTA Coaching, are there special forms that have to be used?**

Yes, WACTA does have some forms that are specifically designed for the Coaching area. The most recent version can be found on the WACTA website or through the State Director of Coaching.

The forms available are:

- † **Application for Coaching & Budget form**
- † Coaches Report form
- † **Application for Junior or Ladies Coaching Clinic & Budget form**
- † Club Coach Accreditation Renewal form
- † **Competition Coach Accreditation Renewal form**
- † Coaching Feed Back or Comments form

**What about if the Club wants to look at getting a "high profile" person from a specific discipline across from the Eastern States, can WACTA Coaching help with that?**

There are avenues available that the Coaching Division can look at, but as with everything, it is best to plan well in advance for such an initiative.

The reason for that is that we want to make the best use of such a person's skills and the better or value we can get from them the better support we may get when seeking funding support

If the value is that if we get better skilled members State wide through these specific "high profile" people, then that plus getting the States Coaches watching or involved, can only lead to greater success.

**I hear that WACTA will support Clubs who host approved Coaching Clinics with targets. Is this true?**

From what I can see in the Coaching information, this is very true and therefore I suggest you look at a Coaching Clinic and submit the forms to the State Coaching Director.

**Is there anything that the WACTA Coaching Division would want from the Clubs around the State?**

Yes. I would like to think that when you consider your shooting calendar for the following year, that you will talk with the other Clubs of your Zone and "pencil in" Coaching Days for specific Disciplines at different Clubs in the Zones. Maybe 1 in each half of the year

For example Zone 5:

- ✓ Skeet at Narrogin
- ✓ DTL at Katanning
- ✓ ISSF at Wagin (if applicable)

## Who is a Coach at my Club.....

### C.M.T

Ivan Halbert (Competition)

### Denmark

Wayne Drake-Brockman (Club)

### Eastern Goldfields

Shane O'Brien (Club)

Stefan Colaiuri (Club)

### Esperance

Des Neale (Competition)

Vince O'Brien (Club)

### Katanning

Barry Kowald (Competition)

Tim Catling (Competition)

### Narrogin

Ross Eckersley (Competition)

Paul Baker (Club)

### Northam

Arthur Ward (Club)

### Wagin

Jim West (Competition)

### WA Gun Club

Murray Alexander (Advanced)

Christine Alexander

(Competition)

Duncan Burnett (Club)

Jed Carter (Club)

Ian Goodenough (Club)

Angelo Galati (Club)

Carlo Zorino (Club)

Ken Parson (Under A/C)

If I have missed anybody then please let me know

**So as you can see, there are a lot of Clubs who need Coaches.....**

**These are Coaches who were a part of your Club, but have let their Accreditation lapse. I would love to have you back involved and accredited.**

- ◆ Murray Tucker & Phil Larsen (Busselton)
- ◆ Amaro Da Luz (Carnarvon)
- ◆ Denise Page & David Fox (Collie)
- ◆ Peter Strike (Denmark)
- ◆ Jeff Neve & Geoff Pearson (Eastern Goldfields)

- ◆ Mick Rowell (Esperance)
- ◆ Jim Chandler / Leonie Noble / Rod Bailey / Gary Kelly / Peter Stuart & Geoff Day (Geraldton)
- ◆ Neil Johnston (Leonora)
- ◆ Elaine Forward (Katanning)
- ◆ Charles Mezzatesta (Northam)
- ◆ Chris Moffatt (Wagin)
- ◆ Nino Amato (Peel & Dist)
- ◆ Ken Green / John McGee / Troy Craigie & Clive Hallatt (WAGC)
- ◆ Jason & Mark Yozzi (Tony Yozzi)

Shooting Complex)

Talk to them & see if they would consider coming back into the Coaching area, as there will be a lot of changes and I personally would like to have them all involved, not only for the Club but for the sport as well.

**Our sport needs them.....  
Thank you for your help.....  
Chris Alexander**